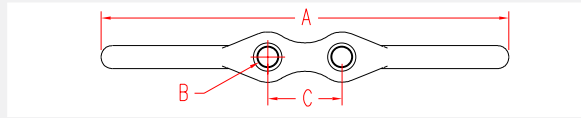


FLAGPOLE CLEAT 304 STAINLESS STEEL



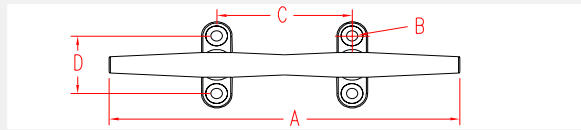
| ITEM | A | B | C | Fastener | WT |
|------------|--------|-------|-------|------------|------|
| | (size) | | | | (lb) |
| S3103-0000 | 2-1/2" | 0.17" | 0.50" | # 8 Screws | 0.03 |
| S3104-0000 | 4-1/2" | 0.22" | 0.81" | #10 Screws | 0.09 |



HERRESHOFF CLEAT 316 STAINLESS STEEL



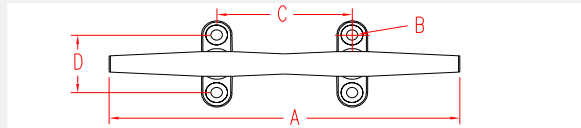
| ITEM | A | B | C | D | Fastener | WT |
|------------|--------|-------|-------|-------|--------------|------|
| | (size) | | | | | (lb) |
| S3106-0000 | 6" | 0.27" | 2.29" | 1.05" | 1/4" Screws | 0.42 |
| S3108-0000 | 8" | 0.27" | 2.82" | 1.34" | 1/4" Screws | 0.75 |
| S3110-0000 | 10" | 0.32" | 3.63" | 1.75" | 5/16" Screws | 1.30 |
| S3112-0000 | 12" | 0.32" | 3.93" | 1.94" | 5/16" Screws | 2.28 |



BLUE WATER CLEAT 316 STAINLESS STEEL



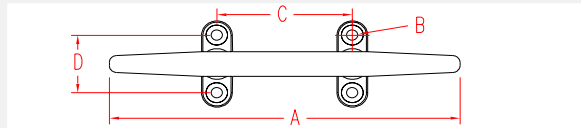
| ITEM | A | B | C | D | Fastener | WT |
|------------|--------|-------|-------|-------|--------------|------|
| | (size) | | | | | (lb) |
| S3138-0000 | 8" | 0.27" | 3.32" | 1.78" | 1/4" Screws | 1.58 |
| S3140-0000 | 10" | 0.32" | 3.74" | 1.87" | 5/16" Screws | 2.52 |
| S3142-0000 | 12" | 0.32" | 4.78" | 2.43" | 5/16" Screws | 3.78 |
| S3145-0000 | 15" | 0.41" | 6.22" | 2.53" | 3/8" Screws | 7.20 |



TRIMLINE CLEAT 316 STAINLESS STEEL

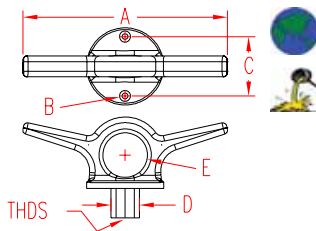


| ITEM | A | B | C | D | Fastener | WT |
|------------|--------|-------|-------|-------|-------------|------|
| | (size) | | | | | (lb) |
| S3204-0000 | 4" | 0.16" | 1.33" | 0.80" | 1/8" Screws | 0.13 |
| S3206-0000 | 6" | 0.26" | 2.09" | 1.65" | 1/4" Screws | 0.73 |
| S3208-0000 | 8" | 0.26" | 2.65" | 1.63" | 1/4" Screws | 1.00 |



LIFT EYE CLEAT

316 STAINLESS STEEL



| ITEM | SIZE | B | C | D | E | WT |
|------------|----------|-------|-------|-------|-------|------|
| | (length) | | | | | (lb) |
| S3250-0000 | 7" | 0.20" | 2.00" | 0.98" | 1.50" | 1.68 |

NOTE:
USES 2 #10 FASTENERS. THREADS ARE 5/8" - 11 UNC.



Key:



Made in USA

Import



Drop Forged

Precision Cast



Precision Machined

Stamped



Wire Formed

Load Rated



Suncor Exclusive

New Product

ORDERS ONLY: 800-394-2222 (USA)
877-495-5510 (CANADA)

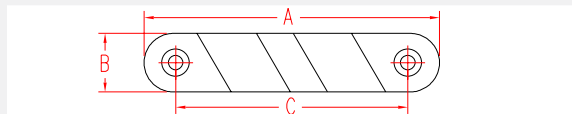
All logos, icons, images, measurements and descriptions are the sole property of Suncor Stainless, Inc.
© 2002 Suncor Stainless, Inc.

BOW CHOCKS 316 STAINLESS STEEL



| ITEM | SIZE | B | C | FASTENER | WT | ROPE |
|------------|----------|-------|-------|-------------|------|-------|
| | (length) | | | | (lb) | (max) |
| S3304-0000 | 4" | 0.81" | 3.13" | # 10 Screws | 0.48 | 5/8" |
| S3306-0000 | 6" | 0.98" | 4.78" | 1/4" Screws | 1.15 | 7/8" |

NOTE:
SOLD IN SETS: ONE PORT, ONE STARBOARD. EDGES ARE POLISHED AND ROUNDED TO PREVENT CHAFE OF LINES.

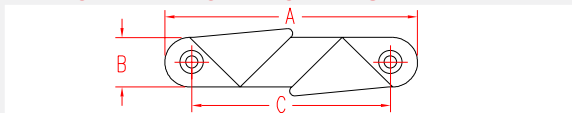


SKENE CHOCKS 316 STAINLESS STEEL



| ITEM | SIZE | B | C | FASTENER | WT | ROPE |
|------------|----------|-------|-------|--------------|------|--------|
| | (length) | | | | (lb) | (max) |
| S3340-0000 | 4" | 0.73" | 3.37" | #10 Screws | 0.52 | 3/4" |
| S3360-0000 | 6" | 0.95" | 4.69" | 1/4" Screws | 1.37 | 1" |
| S3390-0000 | 9" | 1.72" | 7.12" | 5/16" Screws | 5.69 | 1-1/4" |

NOTE:
SOLD IN SETS: ONE PORT, ONE STARBOARD. EDGES ARE POLISHED AND ROUNDED TO PREVENT CHAFE OF LINES.

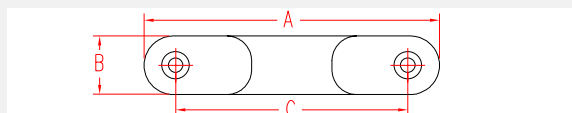


STRAIGHT CHOCK 316 STAINLESS STEEL

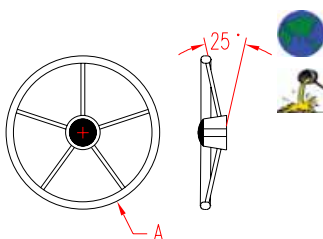


| ITEM | SIZE | B | C | FASTENER | WT | ROPE |
|------------|----------|-------|-------|-------------|------|-------|
| | (length) | | | | (lb) | (max) |
| S3405-0000 | 5" | 0.93" | 4.00" | 1/4" Screws | 0.35 | 3/4" |
| S3406-0000 | 6" | 0.96" | 5.12" | 1/4" Screws | 0.50 | 1" |

NOTE:
SOLD SINGLY. EDGES ARE POLISHED AND ROUNDED TO PREVENT CHAFE OF LINES.



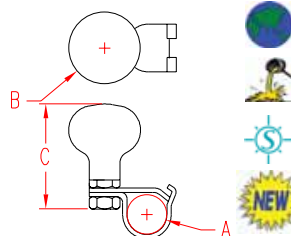
STEERING WHEEL 316 STAINLESS STEEL



| ITEM | A | DEGREE | WT |
|------------|------------|--------|------|
| | (diameter) | | (lb) |
| S3515-2505 | 15-1/2" | 25 | 5.75 |

NOTE:
HUB COLOR IS BLACK.
OTHER VERSIONS ARE AVAILABLE ON SPECIAL ORDER.

STEERING KNOB 316 STAINLESS STEEL

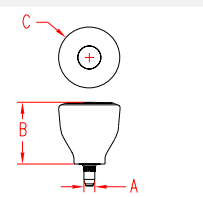


| ITEM | A | B | C | WT |
|------------|------|-------|-------|------|
| | | | | (lb) |
| S3515-0001 | 3/4" | 1.50" | 2.25" | 0.43 |
| S3515-0002 | 1/4" | 2.00" | 2.00" | 0.40 |

NOTE:
S3515-0001 IS DESIGNED TO RETROFIT ONTO STANDARD STEERING WHEELS.

S3515-0002 IS DESIGNED TO THREAD INTO STEERING WHEEL WITH CUSTOM INSERT.

S3515-0002

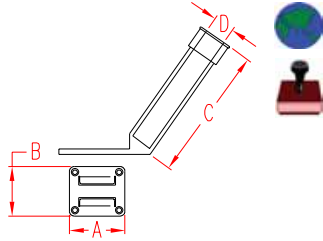


TEL 508-732-9191 • FAX 508-732-9798 • ORDERS ONLY 800-394-2222

www.suncorstainless.com

ROD HOLDER REMOVABLE

304 STAINLESS STEEL

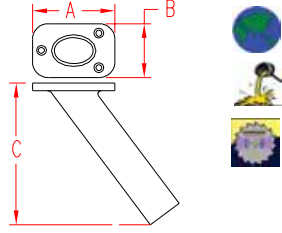


| ITEM | SIZE | B | C | D | FASTENER | WT |
|------------|----------|-------|-------|-------|-------------|------|
| | (length) | | | | | (lb) |
| S3612-0000 | 4" | 3.65" | 10.0" | 1.83" | 1/4" Screws | 1.55 |

NOTE:
SET INCLUDES ROD HOLDER AND MOUNTING PLATE. IDEAL FOR RETROFITS OR WHERE REMOVAL OF ROD HOLDER IS DESIRABLE.

HEAVY CAST TOP ROD HOLDER

FLUSH MOUNT
316 STAINLESS STEEL



| ITEM | A | B | C | DEGREE | FASTENER | WT |
|------------|----------|-------|-------|--------|-------------|------|
| | (length) | | | | | (lb) |
| S3611-0000 | 4-3/8" | 3.38" | 8.50" | 30 | 1/4" Screws | 1.74 |

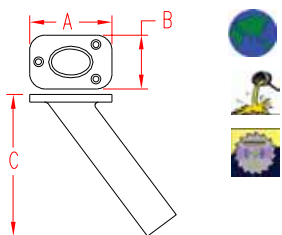
WHITE LINER AND NO CAP

WHITE LINER REPLACEMENT
S3611-1000 0.26

NOTE:
HEAVY DUTY PRECISION CAST HEAD WITH MIRROR FINISH. END OF TUBE IS MACHINED AND DEBURRED.

ROD HOLDER WITH CAP

FLUSH MOUNT
316 STAINLESS STEEL



| ITEM | A | B | C | DEGREE | FASTENER | WT |
|------------|----------|-------|-------|--------|-------------|------|
| | (length) | | | | | (lb) |
| S3611-0001 | 4-3/8" | 3.38" | 8.50" | 30 | 1/4" Screws | 1.79 |

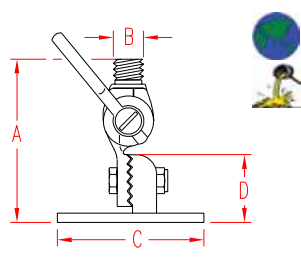
BLACK LINER WITH CAP

BLACK REPLACEMENT CAP
S3611-1001 0.33

NOTE:
HEAVY DUTY PRECISION CAST HEAD WITH MIRROR FINISH. END OF TUBE IS MACHINED AND DEBURRED.

ANTENNA RATCHET MOUNT

316 STAINLESS STEEL

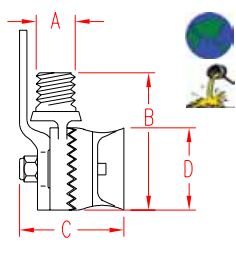


| ITEM | A | B | C | D | FAST. | WT |
|------------|--------|----------|-------|-------|-------|------|
| | (size) | (thread) | | | | (lb) |
| S3620-0000 | 4-1/2" | 1" - 14 | 3.62" | 1.50" | 1/4" | 1.60 |
| S3621-0000 | 6" | 1" - 14 | 3.75" | 2.30" | 1/4" | 2.12 |

NOTE:
HEAVY DUTY ANTENNA RATCHET MOUNT WITH ALL COMPONENTS PRECISION CAST. THREAD "B" FITS STANDARD ANTENNAS.

ANTENNA RAIL MOUNT

316 STAINLESS STEEL



| ITEM | SIZE | A | B | C | D | FAST. | WT |
|------------|----------|---------|-------|-------|-------|-------|------|
| | (thread) | | | | | | (lb) |
| S3625-0000 | #1 | 1" - 14 | 3.50" | 2.50" | 2.00" | 1/4" | 1.24 |

NOTE:
HEAVY DUTY ANTENNA RATCHET MOUNT WITH ALL COMPONENTS PRECISION CAST. THREAD "B" FITS STANDARD ANTENNAS.



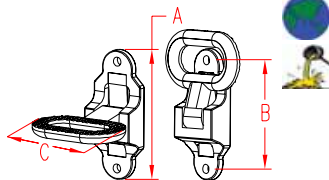
Key:

| | | | | |
|-------------|----------------|--------------------|-------------|------------------|
| Made in USA | Drop Forged | Precision Machined | Wire Formed | Suncor Exclusive |
| Import | Precision Cast | Stamped | Load Rated | New Product |

ORDERS ONLY: 800-394-2222 (USA)
877-495-5510 (CANADA)

All logos, icons, images, measurements and descriptions are the sole property of Suncor Stainless, Inc. © 2002 Suncor Stainless, Inc.

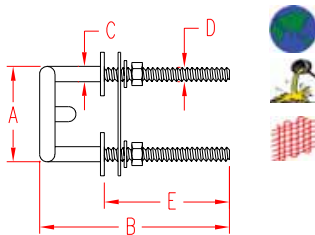
HEAVY DUTY FOLDING STEP 316 STAINLESS STEEL



| ITEM | A | B | C | FAST. | WT |
|------------|--------|-------|-------|-------|------|
| | (size) | | | | (lb) |
| S3630-0000 | 4-3/8" | 3.58" | 3.33" | 5/16" | 0.94 |

NOTE:
USE WHERE TEMPORARY STEP IS REQUIRED. FOLDS UP FLAT WHEN NOT IN USE AND HOLDS EITHER POSITION BY USE OF A LEAF SPRING.

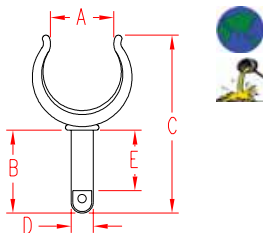
SKI TOW RING 316 STAINLESS STEEL



| ITEM | A | B | C | D | E | WT |
|------------|--------|-------|-------|-----------|-------|------|
| | (size) | | | | | (lb) |
| S3588-0065 | 2-1/2" | 3.94" | 0.37" | 3/8" - 16 | 2.38" | 0.62 |
| S3588-0075 | 3" | 3.94" | 0.37" | 3/8" - 16 | 2.38" | 0.67 |

NOTE:
NUTS AND WASHERS ARE INCLUDED.

OPEN OAR LOCK 316 STAINLESS STEEL

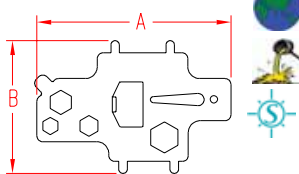


| ITEM | A | B | C | D | E | WT |
|---------------|------------|-------|-------|-------|-------|------|
| | (diameter) | | | | | (lb) |
| SINGLE | | | | | | |
| S3870-0001 | 1-7/8" | 2.00" | 4.75" | 0.47" | 1.50" | 0.33 |
| PAIR | | | | | | |
| S3870-0002 | 1-7/8" | 2.00" | 4.75" | 0.47" | 1.50" | 0.66 |

OAR LOCK BASE
S3871-0000

NOTE:
SOLD SINGLY.
CHROME AND ZAMAC SOCKET SOLD ON PAGE 129.


MULTI-TASK DECK KEY 304 STAINLESS STEEL



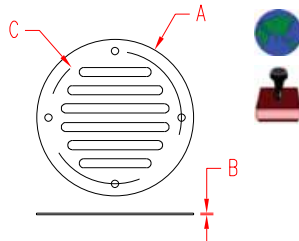
| ITEM | A | B | WT |
|------------|--------|-------|------|
| | (size) | | (lb) |
| S3925-0000 | 4" | 2.75" | 0.14 |

DISPLAY STAND
C3925-1000

NOTE:
DECK KEY COMES WITH COLOR LANYARD.
FITS ALL DECK PLATE CAPS AND COMES WITH BUILT-IN BOTTLE OPENER, SCREW DRIVER, SHACKLE KEY AND #6, #10, 1/4" AND 3/8" HEX DRIVES.



FLOOR DRAIN PLATE 304 STAINLESS STEEL



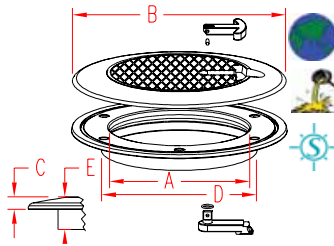
| ITEM | A | B | C | D | WT |
|------------|--------|-------|-------|---|------|
| | (size) | | | | (lb) |
| S3860-0000 | 3-1/4" | 0.04" | 2.75" | | 0.07 |

NOTE:
USE 4 # 8 FASTENERS.



ACCESS HATCH AND FRAME

316 STAINLESS STEEL

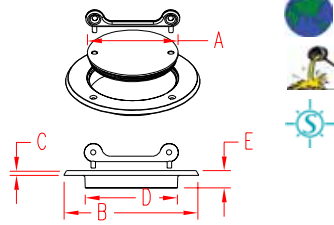


| ITEM | A | B | C | D | E | WT |
|--|--------|-------|-------|-------|-------|------|
| | (size) | | | | | (lb) |
| S3812-0150 | 6" | 9.00" | 0.52" | 6.50" | 1.36" | 5.80 |
| CHEVRON PATTERN. CONVEX, TAPERED RIM. | | | | | | |
| NOTE: HIGHEST QUALITY ACCESS HATCH, FEATURING EXTRA LOW PROFILE, RUBBER GASKET FOR A WEATHER TIGHT SEAL. AND NON-SLIP NON-SKID SURFACE TOP. USE VERTICALLY OR HORIZONTALLY. ENTIRELY REMOVABLE COVER, BOLTS ARE NOT VISIBLE. | | | | | | |



ACCESS HATCH AND FRAME

316 STAINLESS STEEL

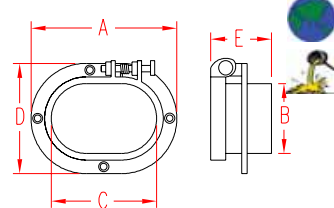
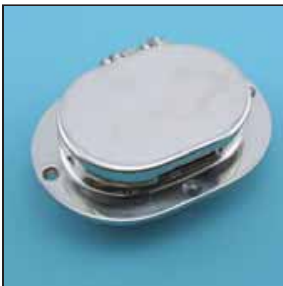


| ITEM | A | B | C | D | E | WT |
|---|--------|-------|-------|-------|-------|------|
| | (size) | | | | | (lb) |
| S3814-0150 | 6" | 9.25" | 0.30" | 6.38" | 1.19" | 5.80 |
| FLUSH MOUNT OR RECESSED. THREADED, ENTIRELY REMOVABLE COVER. | | | | | | |
| NOTE: COMES WITH ACCESS KEY. HIGHEST QUALITY ACCESS HATCH, FEATURING LOW PROFILE, RUBBER GASKET FOR A WEATHER TIGHT SEAL. CAN BE USED VERTICALLY OR HORIZONTALLY. | | | | | | |



CHAIN AND DECK PIPE

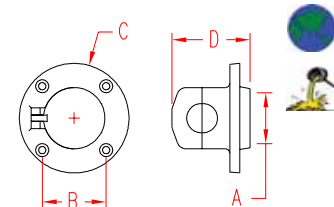
316 STAINLESS STEEL



| ITEM | A | B | C | D | E | WT |
|---|--------|-------|-------|-------|------|------|
| | (size) | | | | | (lb) |
| S3810-0000 | 5-1/2" | 2.71" | 3.72" | 4.08" | 2.00 | 2.03 |
| NOTE: USE #10 FASTENERS. COVER SLIDES TO OPEN AND IS SPRING LOADED TO CLOSE AUTOMATICALLY. | | | | | | |

ROPE DECK PIPE HINGED

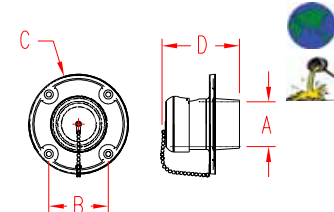
CHROME PLATED BRASS



| ITEM | A | B | C | D | WT | |
|--|--------|-------|-------|-------|------|------|
| | (size) | | | | | (lb) |
| C3808-0002 | 1-1/2" | 1.75" | 3.00" | 2.16" | 0.68 | |
| NOTE: PRECISION CAST. USE 3/16" SCREWS. HINGED TOP FOR EASY ACCESS. | | | | | | |

ROPE DECK PIPE

CHROME PLATED BRASS



| ITEM | A | B | C | D | WT | |
|--|--------|-------|-------|-------|------|------|
| | (size) | | | | | (lb) |
| C3808-0001 | 1-3/4" | 2.35" | 4.00" | 2.94" | 1.12 | |
| NOTE: PRECISION CAST. USE 3/16" SCREWS. SAFETY CHAIN ATTACHED SO TOP IS NOT LOST. | | | | | | |



Key:



Made in USA



Drop Forged



Precision Machined



Wire Formed



Suncor Exclusive



Import



Precision Cast



Stamped



Load Rated



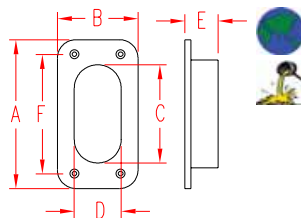
New Product

ORDERS ONLY: 800-394-2222 (USA)
877-495-5510 (CANADA)

All logos, icons, images, measurements and descriptions are the sole property of Suncor Stainless, Inc. © 2002 Suncor Stainless, Inc.

HAWSE PIPE

316 STAINLESS STEEL

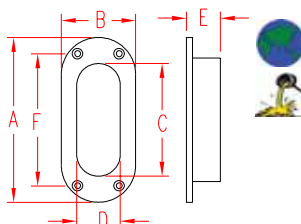


| ITEM | A | B | C | D | E | F | WT |
|-----------------------------|--------|-------|-------|-------|-------|-------|------|
| | (size) | | | | | | (lb) |
| SQUARE S3806-0000 | 6" | 3.25" | 3.92" | 1.88" | 1.34" | 4.85" | 1.38 |

NOTE:
USE #10 FASTENERS.

OVAL HAWSE PIPE

316 STAINLESS STEEL

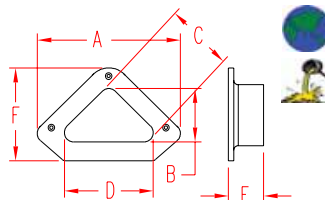


| ITEM | A | B | C | D | E | F | WT |
|---------------------------|--------|-------|-------|-------|-------|-------|------|
| | (size) | | | | | | (lb) |
| OVAL S3806-0001 | 5-1/2" | 2.50" | 3.64" | 1.45" | 1.06" | 4.81" | 0.85 |

NOTE:
USE #10 FASTENERS.

TRIANGULAR HAWSE PIPE

316 STAINLESS STEEL

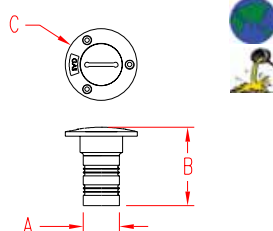


| ITEM | A | B | C | D | E | F | WT |
|------------|--------|-------|-------|-------|-------|-------|------|
| | (size) | | | | | | (lb) |
| S3807-0000 | 7-7/8" | 2.81" | 3.62" | 5.00" | 1.98" | 4.87" | 2.60 |

NOTE:
USE #10 FASTENERS.

HOSE DECK FILLS

316 STAINLESS STEEL



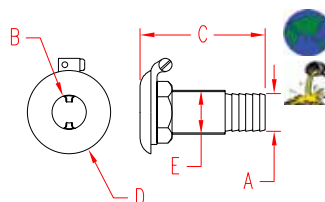
| ITEM | A | B | C | TYPE | FAST. | WT | |
|------------|--------|-------|-------|--------|-------|------|------|
| | (hose) | | | | | | (lb) |
| S3911-0000 | 1-1/2" | 3.35" | 3.00" | GAS | # 10 | 1.00 | |
| S3912-0000 | 1-1/2" | 3.35" | 3.00" | DIESEL | # 10 | 1.00 | |
| S3913-0000 | 1-1/2" | 3.35" | 3.00" | WATER | # 10 | 1.00 | |
| S3914-0000 | 1-1/2" | 3.35" | 3.00" | WASTE | # 10 | 1.00 | |
| S3921-0000 | 2" | 3.47" | 3.50" | GAS | # 10 | 1.37 | |
| S3922-0000 | 2" | 3.47" | 3.50" | DIESEL | # 10 | 1.37 | |

REPLACEMENT CAP
S3920-0000 1-1/2"

NOTE:
EACH DECK FILL SET INCLUDES BODY, CHAIN, CAP AND KEY EXCEPT THE WASTE SET WHICH DOES NOT INCLUDE CHAIN

THRU-HULL HOSE CONNECT

316 STAINLESS STEEL



| ITEM | A | B | C | D | E | WT | |
|------------|--------|-----------------------------------|-------|-------|-------|------|------|
| | (size) | | | | | | (lb) |
| S3815-0020 | 3/4" | CALL FOR DETAILS AND AVAILABILITY | | | | | |
| S3815-0025 | 1" | 0.75" | 2.89" | 1.92" | 1.03" | 0.42 | |
| S3815-0028 | 1-1/8" | 1.00" | 3.09" | 2.14" | 1.30" | 0.56 | |
| S3815-0032 | 1-1/4" | 1.12" | 3.15" | 2.32" | 1.49" | 0.68 | |
| S3815-0038 | 1-1/2" | 1.33" | 3.27" | 2.53" | 1.63" | 0.76 | |
| S3815-0050 | 2" | 1.50" | 3.35" | 2.80" | 1.87" | 1.06 | |

NOTE:
EACH SET CONTAINS THRU-HULL, WASHER WITH GROUNDING LUG, AND NUT.



TEL 508-732-9191 • FAX 508-732-9798 • ORDERS ONLY 800-394-2222

www.suncorstainless.com